

SPANISH ART PROJECT

2018

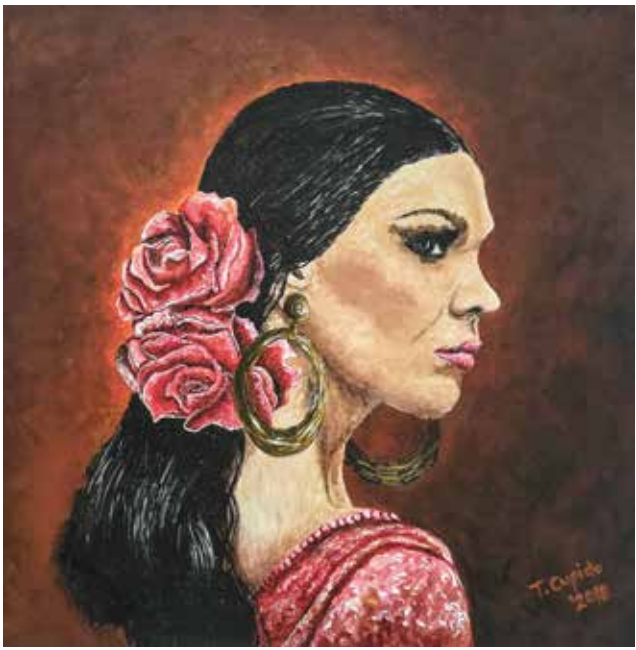
SPANISH INSPIRED ART
BY CHRISTEL HOUSE SA
STUDENTS & GRADUATES

CATALOGUE

 **Christel
House[®]
South Africa**



AMBER ARENDSE



TOY-YIEBAH CUPIDO



CHAUNDEE THORNTON



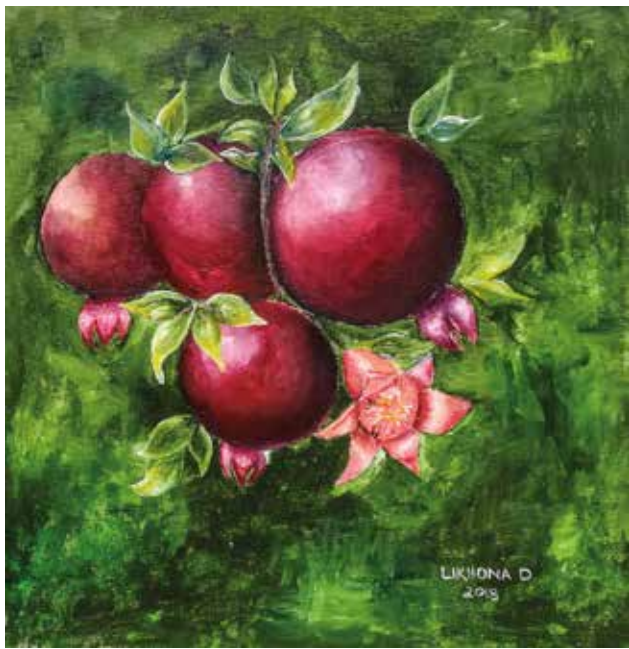
MIHLE SIKO



ROBYN JAFTHA



TOY-YIEBAH CUPIDO



LIKHONA DYAN



CHAUNDEE THORNTON



AMBER ARENDSE



CHAUNDEE THORNTON



AMBER ARENDSE



TOY-YIEBAH CUPIDO



JAMIE-LEE WILLIAMS



VIVIENNE STEWART



CHAUNDEE THORNTON



TOY-YIEBAH CUPIDO



JOSHUA JACKSON



CHAUNDEE THORNTON



AMBER ARENDESE



PATTI WILLIAMS



CHAUNDEE THORNTON



UNATHI SILINGILE



AMBER ARENDESE



CHAUNDEE THORNTON



JAMIE-LEE WILLIAMS



AMBER ARENDSE



TOY-YIEBAH CUPIDO



TOY-YIEBAH CUPIDO



LONWABO SOMANA



JOSHUA JACKSON



UNATHI SILINGILE



RA-EESA BARENDSE



PATTI WILLIAMS



JOSHUA DAVIS



LELONA MNANI



RAFIQ ISMAIL



ZIZIPHO NUWENI



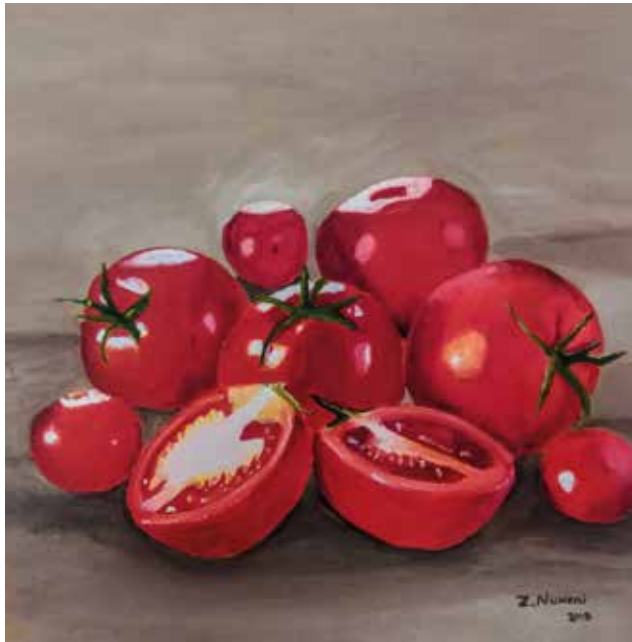
ANASTASIA ADAMS



ASANDA MALOBOLA



ASANDA MALOBOLA



ZIZIPHO NUWENI



JOSHUA DAVIS



AVUGILE MOSHI



LIKHONA DYAN



RA-EESA BARENDSE



RA-EESA BARENDSE



LUTHANDO BABAYI



ZENECA PLATO



CAITLYN PETERSON



MBALI MADZINGA



UNATHI SILINGILE



VIVIENNE STEWART



ROBYN JAFTHA



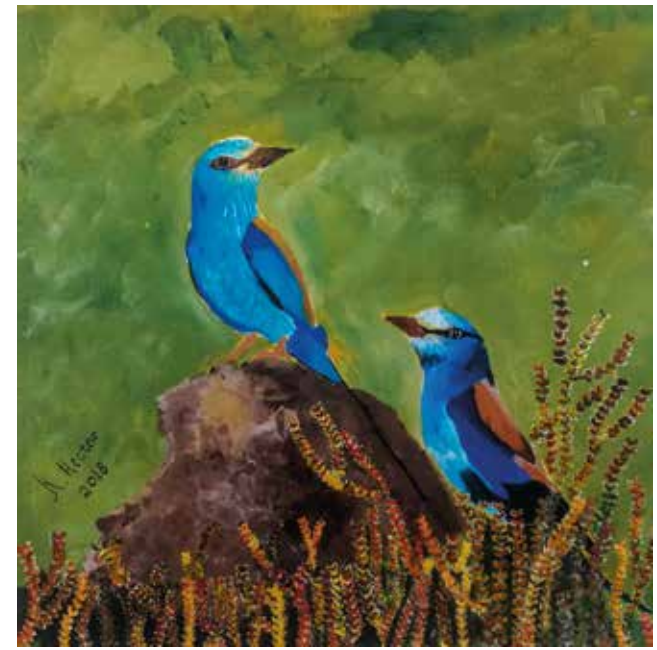
AMBER ARENDSE



CHANEL ANDRAS



MESULI NQESO



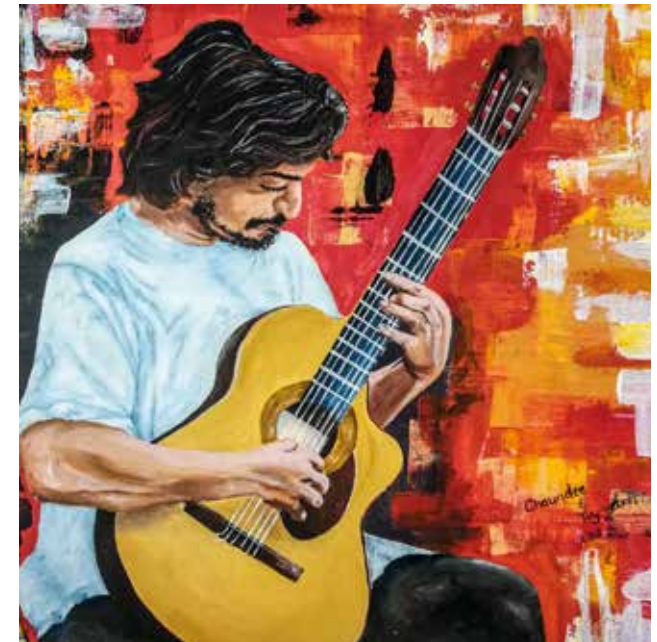
KEENO HECTOR



KELLY-LEE HECTOR



AMBER ARENDSE



CHAUNDEE & TOY-YIEBAH

ABOUT CHRISTEL HOUSE SOUTH AFRICA

Established in 1998, Christel House is an international charitable R-12 school that operates eight learning centres around the world, with a single mission: to break the cycle of poverty and to build self-sufficient, contributing members of society. Poverty touches every aspect of a child's life, determines their future and almost always leaves them trapped in a spiral of unemployment and continued poverty. Today, more than 30 million South Africans (55% of the population) are living in poverty (StatsSA).

As part of the Christel House holistic 18-year offering, we instill strong character development ethics, complemented by professional health care, nutritious meals, psychosocial support, family assistance, college and careers planning - up until five years after graduating. Students receive a 100% funded scholarship on admission.

Our school in Ottery, Cape Town, is the only Christel House institution in Africa. Every child attending Christel House South Africa comes from one of twenty severely impoverished communities in the Cape Flats region of Cape Town (e.g. Langa, Philippi, Mannenberg, Delft) where poverty, crime and drugs are rife.

Despite their challenging socio-economic circumstances, Christel House students go on to achieve exceptional results, outstripping their peers by 400% in Mathematics and English and attaining a 100% matric pass rate since inception. 94% of our graduates continue to study, are gainfully employed or both.

A total of 28 Christel House members created the current sixty Spanish paintings, including one Art Teacher, three graduates (alumni) and 24 Christel House students, aged 14 - 18.



**Christel
House[®]
South Africa**

www.sa.christelhouse.org